



# MASTERCLASS WORKSHOP

**RM 2,800 Only !!!**

+ add RM 500 for  
**MASTERCLASS LECTURE**  
on 22/9/18 !



## THE BEAUTY OF REPLICATING NATURE

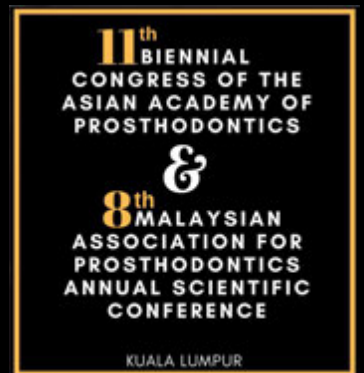
PROF. FRANCESCO M. MANGANI  
MD, DDS.

23<sup>rd</sup> SEPTEMBER 2018

Dental Academy, Subang



Malaysian Association  
for Prosthodontics



**REGISTER ONLINE NOW**

**[www.aap2018.maprotho.com.my](http://www.aap2018.maprotho.com.my)**





PROF. FRANCESCO M.  
MANGANI MD, DDS

2018

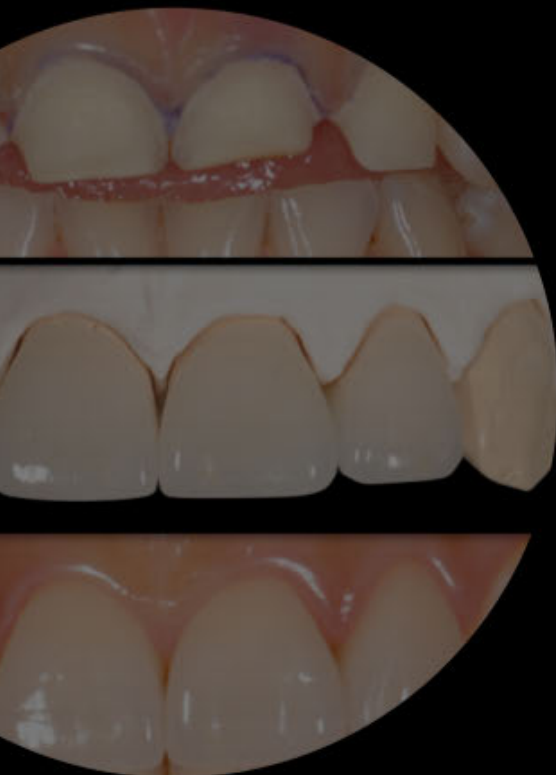
## ONE-DAY MASTERCLASS WORKSHOP

### A SIMPLIFIED APPROACH TO INDIRECT COMPOSITE RESTORATIONS: VENEERS, INLAYS, & ONLAYS

#### Workshop outline

##### Indirect Posterior Restorations

- Participants will be able to "realize" on extracted molars of cavity preparations for MOD inlay and overlay
- Every participant must realize by himself a composite inlay followed by cementation procedure using heated high filled composite resin or traditional high filled composite cement. Then, practice the finishing and polishing of the restoration



##### Indirect Anterior Restorations

- Participants will be able to "realize" on extracted central incisors of cavity preparations for veneer
- Every participant must realize his own veneer followed by cementation procedure using heated high filled composite resin or traditional high filled composite cement. Then, practice the finishing and polishing of the restoration

Register online at [www.aap2018.maprosthodontics.com.my](http://www.aap2018.maprosthodontics.com.my)

**BEFORE**

MASTERCLASS WORKSHOP @ Dental Academy



**AFTER**

**23**<sup>rd</sup>  
September

**Masterclass Workshop**

@ Dental Academy

A Simplified Approach To Indirect Composite Restorations

**VENEERS, INLAYS & ONLAYS**

Time	Program
0800 - 0830	• <i>Registration</i>
0830 - 1000	• Indirect anterior restorations Demonstration and practical
1000-1030	• <i>Tea break</i>
1030-1230	• <i>Continue</i> Indirect anterior restorations
1230-1400	• <i>Lunch</i>
1400-1700	• Indirect posterior restorations Demonstration and practical
	Final discussion and questions with the participants
1700	• <i>Tea break / End</i>

**Masterclass Workshop fee: RM 2800 nett**

*\*Registration closes on 15<sup>th</sup> Sept 2018*

Please contact Maco Siow (012-7311529) , [macosiow.tds@gmail.com](mailto:macosiow.tds@gmail.com) for further details

Participants are required to bring along teeth for the workshop.  
Please visit [www.aap2018.maprosthocom.my](http://www.aap2018.maprosthocom.my) for further details



Workshop participants can enjoy the **Masterclass Lecture** for an additional RM 500. Register now !!

# MASTERCLASS LECTURE

## 22<sup>nd</sup> September 2018 | Hotel Istana

### QUALITY AND EXCELLENCE IN MODERN ADHESIVE DENTISTRY

**SPECIAL  
DEAL**

#### Abstract

Nowadays the maintenance of "a nice smile" represents the main desire of our patients and the request for tooth coloured restorations is very high. Predictable and repeatable results can be achieved through materials and clinical practices that, on one hand, preserve the original structure of the compromised tooth and, on the other hand, involve a very low biologic price.

New technologies for enamel-dentinal adhesion and the continuous evolution of more sophisticated aesthetic materials as composite resins with high refraction index and porcelains allow the effective reaching of verifiable and predictable results. Technologies and materials have to follow an operative approach that strictly involves operative steps which have been carefully codified referring to the materials typology used from time to time.

This masterclass aims to point out the relevant guidelines in both direct and indirect techniques for aesthetic anterior and posterior restorations through the evaluation of the disposable techniques and materials in order to reach and standardized clinical result in respect of the restorative aesthetic dentistry.

Time	Program
0800 - 0830	• <b>Registration</b>
0830 - 1000	• Guidelines for a "high professional" conservative dentistry • Fundamentals in dental and gingival aesthetics • Terminology of 'color' in conservative dentistry • The role of adhesion in modern operative procedures • The new composite resins for a predictable aesthetic result in anterior tooth
1000 - 1030	• <b>Tea break</b>
1030 -1230	• A simple and repeatable technique for anatomic layering and standardized finishing • Improving aesthetic results using composite or porcelain veneers
1230-1400	• <b>Lunch</b>
1400 -1700	• Modern and simplified concepts for the direct restoration of posterior teeth • Indirect restorations: Inlay, onlay, overlays Biomechanical principles of cavity preparation, cementation and finishing procedures • Post-endo adhesive conservative restorations of anterior and posterior teeth
	Final discussion and questions with the participants
1700	• <b>Tea break / End</b>

**Important Note:**

*Participants are required to bring along extracted teeth for the projects.*

**1) Two molars teeth**

**2) One central incisor**

- *Please mount both project separately on gypsum/resin.*
- *For the molars, mounting has to be aligned and in contact.*
- *Refer photos as guideline.*

